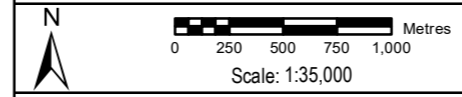


**Legend:**

- PROJECT BOUNDARY FOR EIA PEIR
- SURFACE WATER STUDY AREA FOR EIA PEIR
- GROUNDWATER STUDY AREA FOR EIA PEIR
- RUNNYMEDE CHANNEL
- SPELTHORNE CHANNEL
- SOURCE PROTECTION ZONE 1
- SOURCE PROTECTION ZONE 2
- SOURCE PROTECTION ZONE 3
- RIVER THAMES
- SUPERFICIAL AQUIFER PRINCIPAL
- SECONDARY A
- SECONDARY (UNDIFFERENTIATED)
- UNPRODUCTIVE
- UNKNOWN

Main Plan Scale:



Reproduced by permission of Ordnance Survey on behalf of HMSO. © Crown Copyright and Database Rights [2023] OS [100024198]

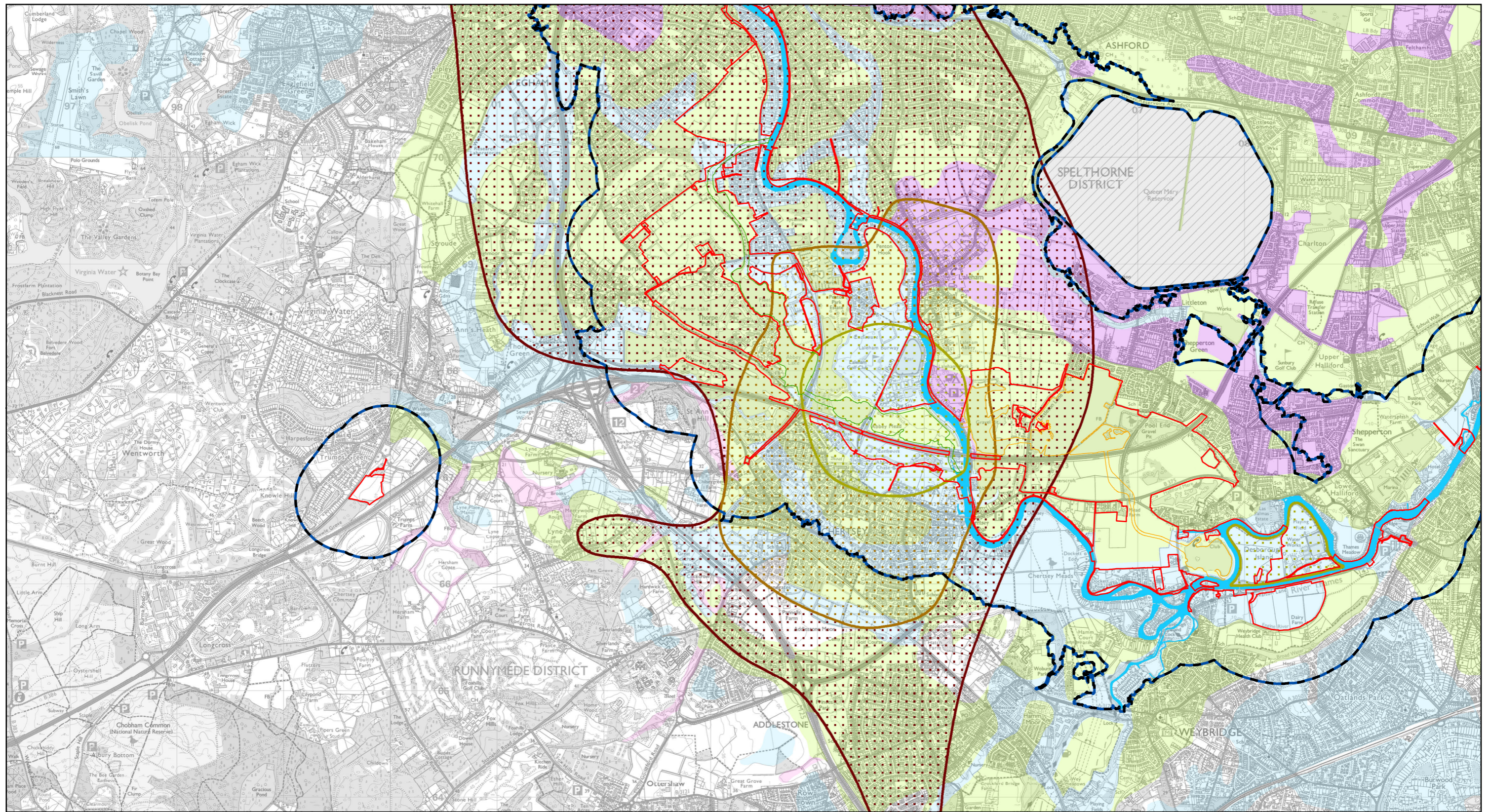


**RIVER THAMES SCHEME**

**EIA PEIR - FIGURE 5.36:  
GROUNDWATER STUDY AREA  
SHEET 1 OF 4**

C01	MA	SJC	VL	KQ	17/11/2023	FOR PUBLIC CONSULTATION
P01	MA	SJC	VL	KQ	14/08/2023	FOR REVIEW AND COMMENT
Rev.	Drawn	Chkd	Rwd	Apprvd	Date	Description
Status: S10						
Designed by: MA		Date: 11/23			Revision: C01	
Scale: 1:35,000 Project Number: 4021225 Drawing Number: ENV/MS/0260-CBI-ZZ-32-DR-EN-00/06						

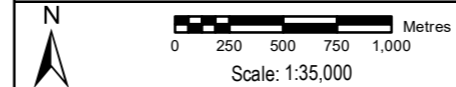
R:\Projects\4021225\_R136\_Windsor\2 - Main Map\ENVI\MS/0260-CBI-ZZ-32-DR-EN-00/06.mxd A410/09/09 17/11/2023



**Legend:**

- PROJECT BOUNDARY FOR EIA PEIR
- SURFACE WATER STUDY AREA FOR EIA PEIR
- GROUNDWATER STUDY AREA FOR EIA PEIR
- RUNNYMEDE CHANNEL
- SPELTHORNE CHANNEL
- SOURCE PROTECTION ZONE 1
- SOURCE PROTECTION ZONE 2
- SOURCE PROTECTION ZONE 3
- RIVER THAMES
- SUPERFICIAL AQUIFER PRINCIPAL
- SECONDARY A
- SECONDARY (UNDIFFERENTIATED)
- UNPRODUCTIVE
- UNKNOWN

Main Plan Scale:



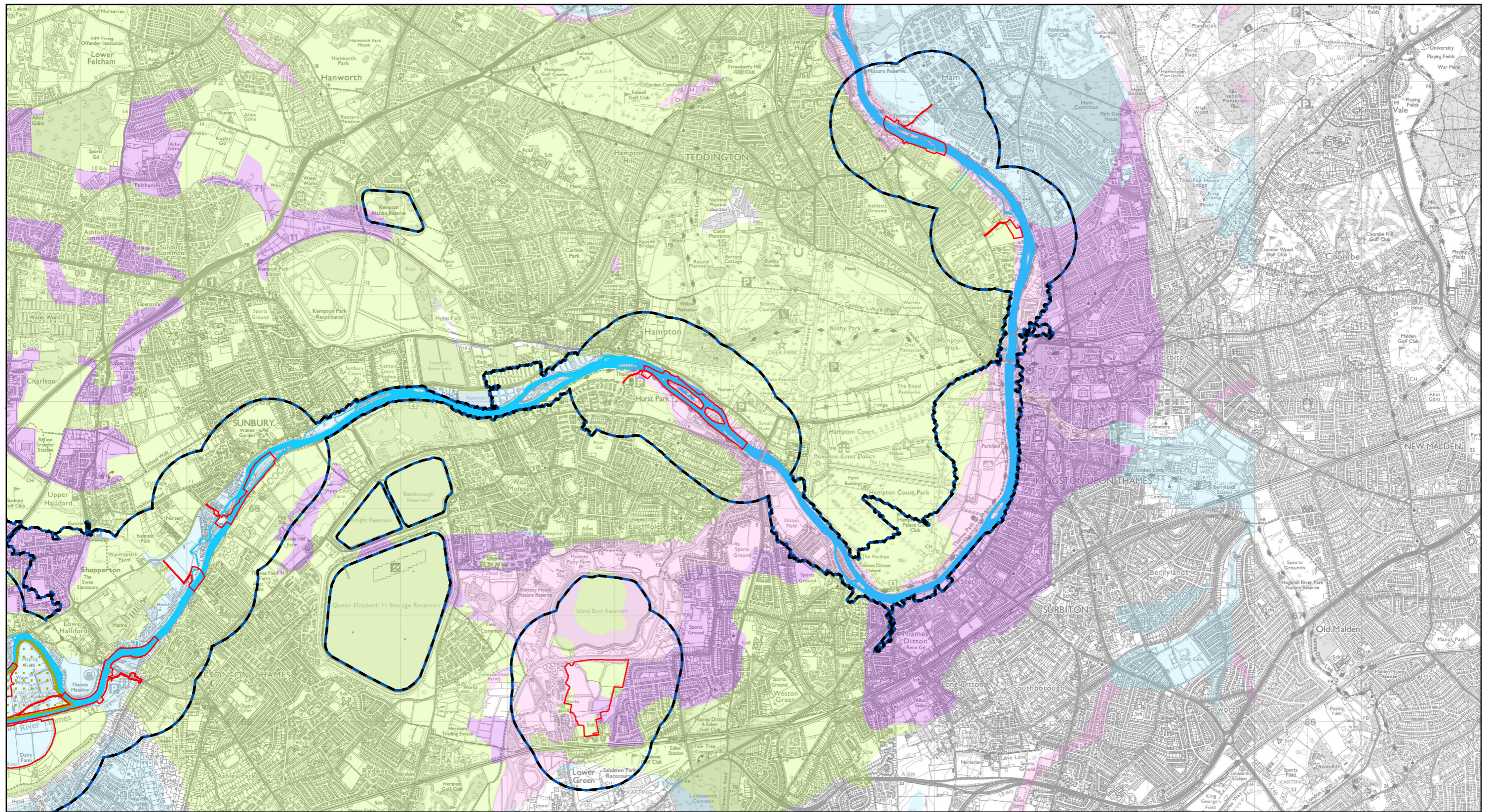
Reproduced by permission of Ordnance Survey on behalf of HMSO. © Crown Copyright and Database Rights [2023] OS [100024198]



**RIVER THAMES SCHEME**

**EIA PEIR - FIGURE 5.36:  
GROUNDWATER STUDY AREA  
SHEET 2 OF 4**

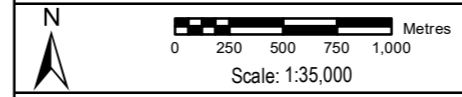
C01	MA	SJC	VL	KQ	17/11/2023	FOR PUBLIC CONSULTATION
P01	MA	SJC	VL	KQ	14/08/2023	FOR REVIEW AND COMMENT
Rev.	Drawn	Chkd	Rwd	Apprvd	Date	Description
Status: S10						
Designed by: MA		Date: 11/23			Revision: C01	
Scale: 1:35,000 Project Number: 4021225 Drawing Number: EN/MSE50026-CBI-ZZ-32-DR-EN-0006						



**Legend:**

- PROJECT BOUNDARY FOR EIA PEIR
- SURFACE WATER STUDY AREA FOR EIA PEIR
- GROUNDWATER STUDY AREA FOR EIA PEIR
- RUNNYMEDE CHANNEL
- SPELTHORNE CHANNEL
- SOURCE PROTECTION ZONE 1
- SOURCE PROTECTION ZONE 2
- SOURCE PROTECTION ZONE 3
- RIVER THAMES
- SUPERFICIAL AQUIFER**
- PRINCIPAL
- SECONDARY A
- SECONDARY (UNDIFFERENTIATED)
- UNPRODUCTIVE
- UNKNOWN

Main Plan Scale:



Reproduced by permission of Ordnance Survey on behalf of HMSO. © Crown Copyright and Database Rights [2023] OS [100024198]



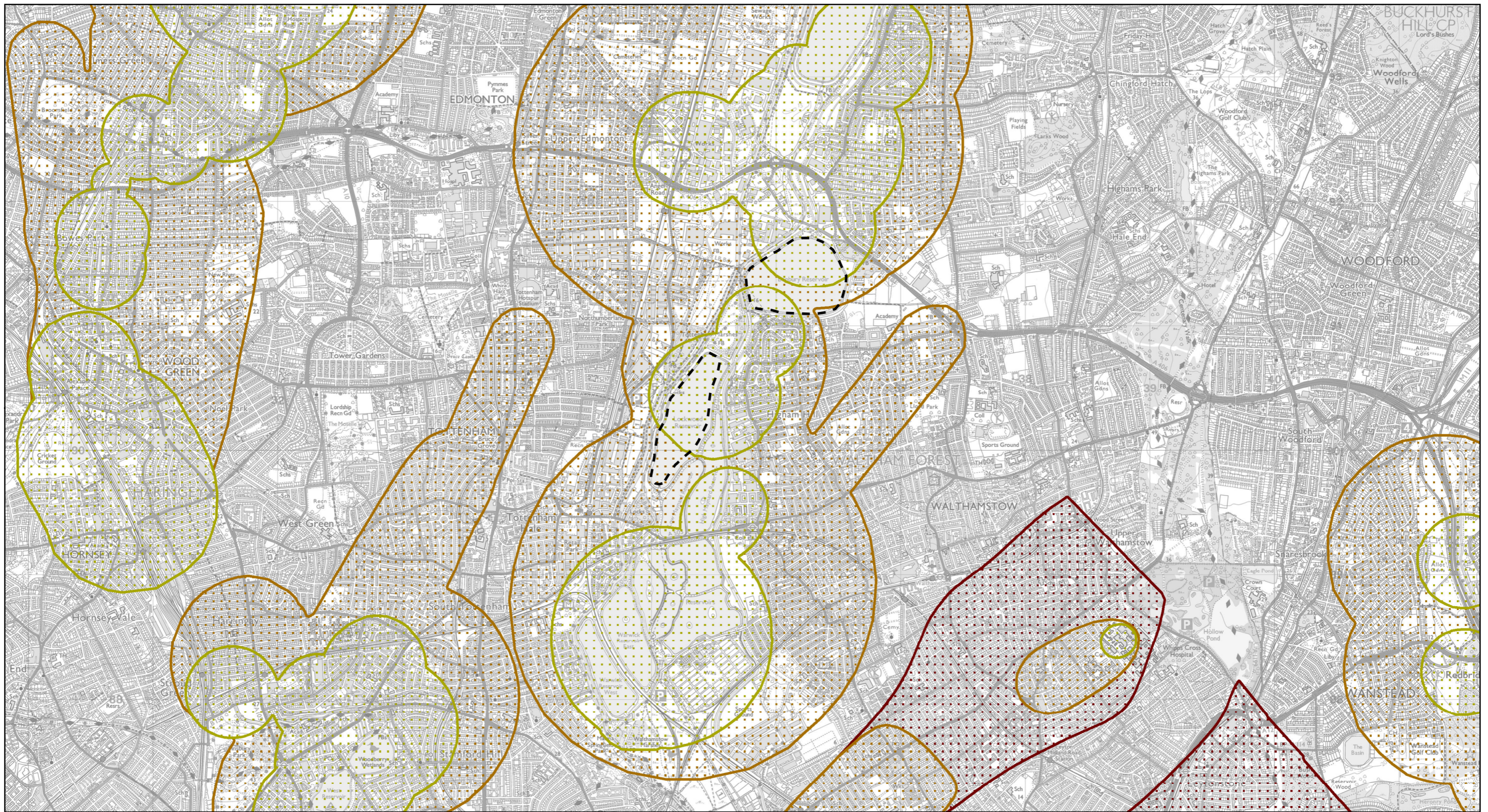
**wsp** **binnies**  
 Delivering Sustainable Outcomes Through Collaborative Working  
 Registered Office: Spring Lodge, 172 Chester Road, Helsby, Cheshire, WA6 0AR UK  
 Registered in England & Wales No: 03163649

**RIVER THAMES SCHEME**

**EIA PEIR - FIGURE 5.36:  
 GROUNDWATER STUDY AREA  
 SHEET 3 OF 4**

Rev.	Drawn	Chkd	Rwdd	Apprvd	Date	Description
C01	MA	SJC	VL	KQ	17/11/2023	FOR PUBLIC CONSULTATION
P01	MA	SJC	VL	KQ	14/08/2023	FOR REVIEW AND COMMENT

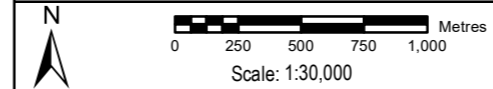
Status: S10  
 Designed by: MA Date: 11/23 Revision: C01  
 Scale: 1:35,000 Project Number: 4021225 Drawing Number: ENV/MS/00260-CBI-ZZ-3Z-DR-EN-0006



**Legend:**

- PROJECT BOUNDARY FOR EIA PEIR
- SURFACE WATER STUDY AREA FOR EIA PEIR
- GROUNDWATER STUDY AREA FOR EIA PEIR
- RUNNYMEDE CHANNEL
- SPELTHORNE CHANNEL
- SOURCE PROTECTION ZONE 1
- SOURCE PROTECTION ZONE 2
- SOURCE PROTECTION ZONE 3
- RIVER THAMES
- SUPERFICIAL AQUIFER**
- PRINCIPAL
- SECONDARY A
- SECONDARY (UNDIFFERENTIATED)
- UNPRODUCTIVE
- UNKNOWN

Main Plan Scale:



Reproduced by permission of Ordnance Survey on behalf of HMSO. © Crown Copyright and Database Rights [2023] OS [100024198]



**RIVER THAMES SCHEME**

**EIA PEIR - FIGURE 5.36:  
GROUNDWATER STUDY AREA  
SHEET 4 OF 4**

C01	MA	SJC	VL	KQ	17/11/2023	FOR PUBLIC CONSULTATION
P01	MA	SJC	VL	KQ	14/08/2023	FOR REVIEW AND COMMENT
Rev.	Drawn	Chkd	Rwrd	Apprvd	Date	Description
Status: S10						
Designed by: MA		Date: 11/23		Revision: C01		
Scale: 1:30,000 Project Number: 4021225 Drawing Number: EN/MSE/00260-CBI-ZZ-32-DR-EN-0006						

R:\Project\4021225\_R138\_Works\area2\_haua\_Map\EN\MSE\00260-CBI-ZZ-32-DR-EN-0006.mxd A4108909 17/11/2023