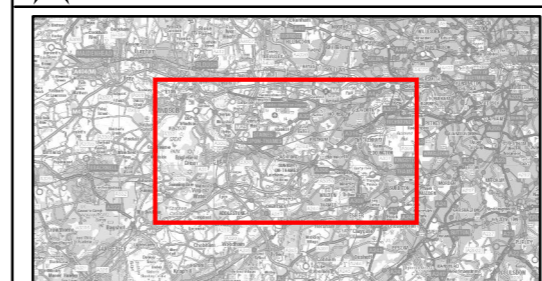
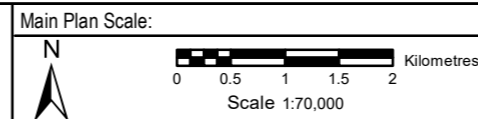


Legend

- PROJECT BOUNDARY FOR EIA PEIR
 - SOCIO-ECONOMIC STUDY AREA FOR EIA PEIR
 - RUNNYMEDE CHANNEL
 - SPELTHORNE CHANNEL
 - RIVER THAMES
- | LOWER SUPER OUTPUT AREA IMD RANK | | |
|---|--|--|
| 10% MOST DEPRIVED | 40-50% LEAST DEPRIVED | |
| 10-20% MOST DEPRIVED | 30-40% LEAST DEPRIVED | |
| 20-30% MOST DEPRIVED | 20-30% LEAST DEPRIVED | |
| 30-40% MOST DEPRIVED | 10-20% LEAST DEPRIVED | |
| 40-50% MOST DEPRIVED | 10% LEAST DEPRIVED | |



Reproduced by permission of Ordnance Survey on behalf of HMSO. © Crown Copyright and Database Rights [2023] OS [100024198]



wsp binnies
Delivering Sustainable Outcomes Through Collaborative Working
 Registered Office: Spring Lodge, 172 Chester Road, Helsby, Cheshire, WA6 0AR UK
 Registered in England & Wales No: 03163649

RIVER THAMES SCHEME

**EIA PEIR - FIGURE 5.27:
 INDICES OF MULTIPLE DEPRIVATION**

Rev.	Drawn	Chkd	Rwd	Apprd	Date	Description
C01	MA	DJ	WH	KQ	17/11/2023	FOR PUBLIC CONSULTATION
P01	MA	DJ	WH	KQ	14/08/2023	FOR REVIEW AND COMMENT
Status: S10						
Designed by: MA		Date: 11/23			Revision: C01	
Scale: 1:70,000			Project Number: 4021225 Drawing Number: ENV/MS500260-CBI-ZZ-3ZZ-DR-EN-0070			