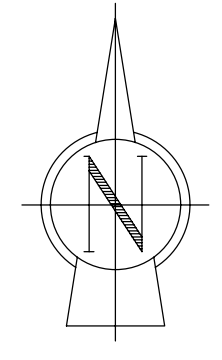
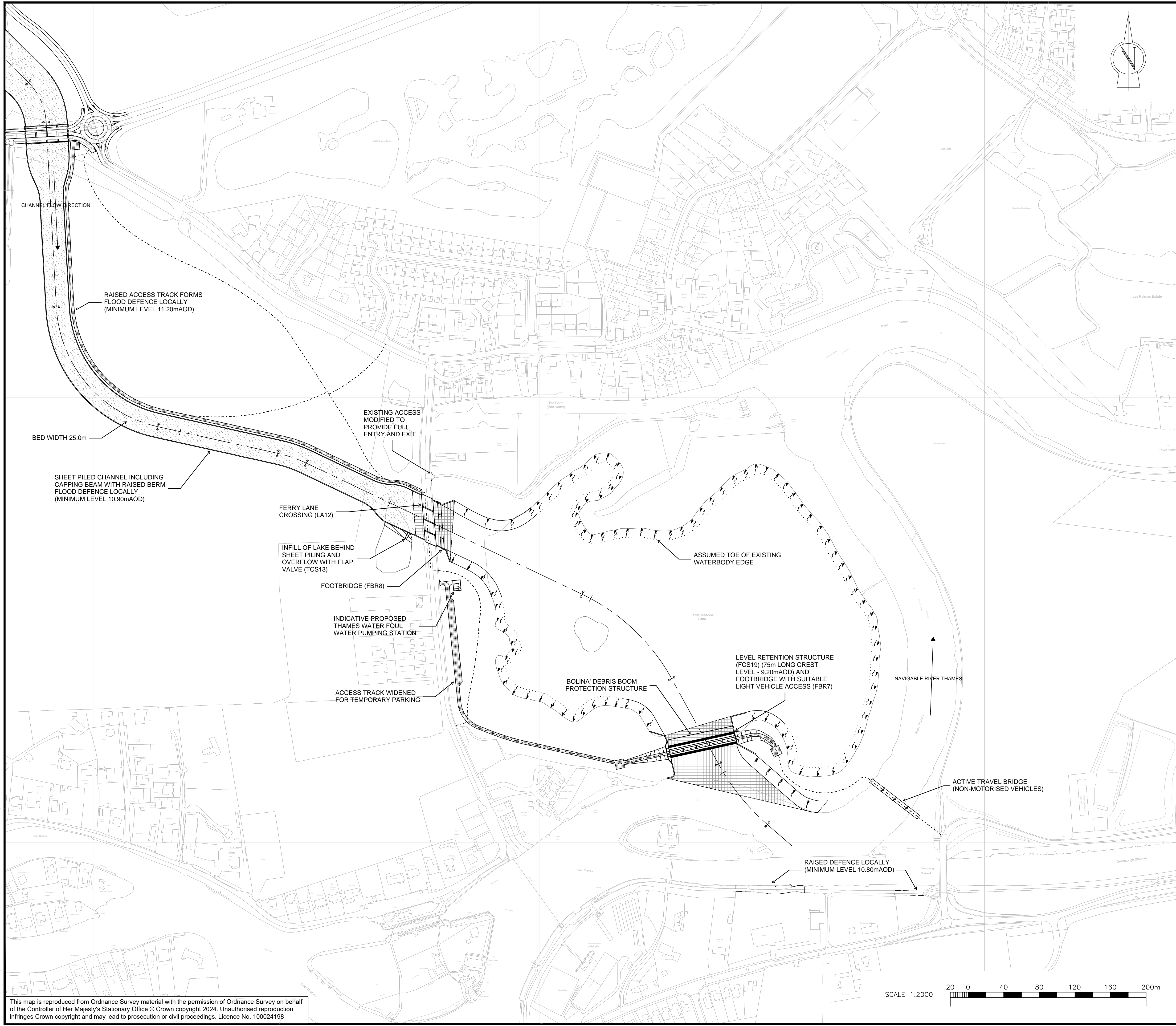




Supplementary Consultation 3 September to 7 October 2024
Ferris Meadow Lake Options Appraisal Report

Appendix A - Option Drawings





Originator's Information Container
ENVIMSE500260-CBI-ZZ-3SCS-DR-C-46000

NOTES:
 1. ALL DIMENSIONS IN METRES AND ALL LEVELS IN METRES AOD, UNLESS NOTED OTHERWISE.

LEGEND:

	CONCRETE BED PROTECTION		JOINT MARKERS
	BANK / BED SCOUR PROTECTION		'EL
	ACCESS TRACK		
	INDICATIVE ACTIVE TRAVEL ROUTE		
	SHEET PILED CHANNEL		

SAFETY, HEALTH AND ENVIRONMENTAL INFORMATION:
 IN ADDITION TO THE HAZARDS OR RISKS NORMALLY ASSOCIATED WITH THE TYPES OF WORK DETAILED ON THIS DRAWING, THE FOLLOWING SIGNIFICANT RESIDUAL RISKS SHOULD BE NOTED. FURTHER DETAILS ARE INCLUDED IN THE CDM DESIGN RISK MANAGEMENT REGISTER

CONSTRUCTION:
 NO SIGNIFICANT RISKS IDENTIFIED

MAINTENANCE, CLEANING AND OPERATION:
 NO SIGNIFICANT RISKS IDENTIFIED

DECOMMISSIONING OR DEMOLITION:
 NO SIGNIFICANT RISKS IDENTIFIED

P01.01	Rev.	Description	Date	Author	Designer	Checker	Reviewer	Approver
	Document Control							
	Supplier							

Project Title
WSP Binnies
 60 High Street, Redhill, Surrey, RH1 1SH, UK.
 Tel: +44(0)1737 856399

Drawing Title
**THE RIVER THAMES SCHEME
 ECC PHASE
 FERRIS MEADOW LAKE**

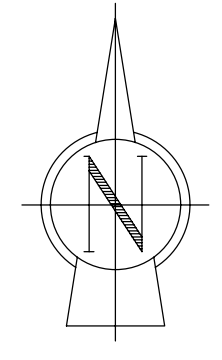
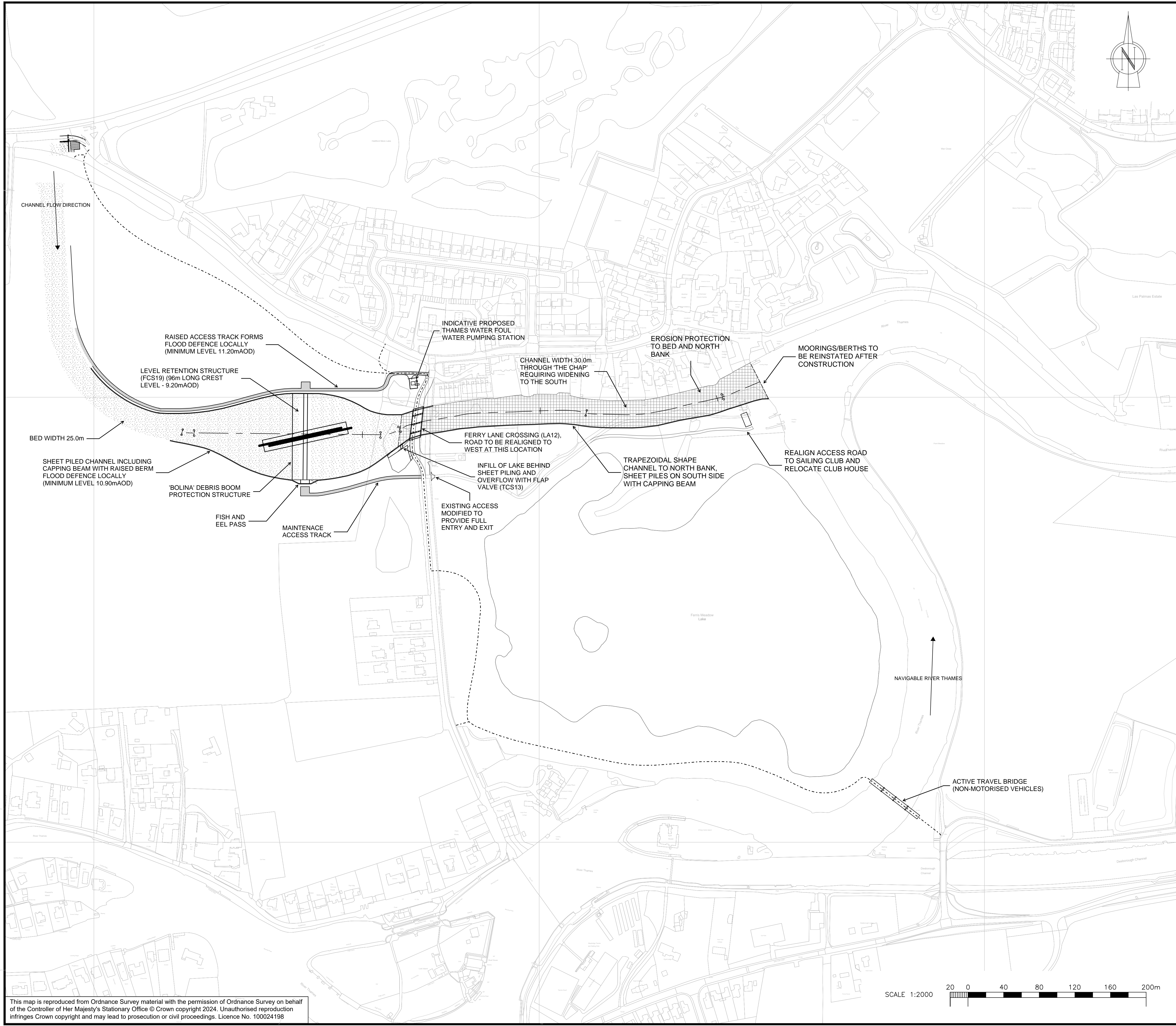
Option 1 - Current proposal, flood channel passes through Ferris Meadow Lake

© copyright reserved
 Parent Model
NOT FROM MODEL
 Security Classification
OFFICIAL
 Scale
1:2000

Author SPJ	Designer DESIGNER	Checker CHECKER	Reviewer REVIEWER	Approver APPROVER
Suitability Initial Status or WIP	Status S0	Revision P01.01	Information Container ENVIMSE500260-CBI-ZZ-3SCS-DR-C-46000	
			A1 Sheet Size	

This map is reproduced from Ordnance Survey material with the permission of Ordnance Survey on behalf of the Controller of Her Majesty's Stationary Office © Crown copyright 2024. Unauthorised reproduction infringes Crown copyright and may lead to prosecution or civil proceedings. Licence No. 100024198





Originator's Information Container
ENVIMSE500260-CBI-ZZ-3SCS-DR-C-46000

NOTES:
 1. ALL DIMENSIONS IN METRES AND ALL LEVELS IN METRES AOD, UNLESS NOTED OTHERWISE.

LEGEND:

- CONCRETE BED PROTECTION
- BANK / BED SCOUR PROTECTION
- ACCESS TRACK
- INDICATIVE ACTIVE TRAVEL ROUTE
- SHEET PILED CHANNEL
- JOINT MARKERS
- 'EL'

SAFETY, HEALTH AND ENVIRONMENTAL INFORMATION:

IN ADDITION TO THE HAZARDS OR RISKS NORMALLY ASSOCIATED WITH THE TYPES OF WORK DETAILED ON THIS DRAWING, THE FOLLOWING SIGNIFICANT RESIDUAL RISKS SHOULD BE NOTED. FURTHER DETAILS ARE INCLUDED IN THE CDM DESIGN RISK MANAGEMENT REGISTER

CONSTRUCTION:
 NO SIGNIFICANT RISKS IDENTIFIED

MAINTENANCE, CLEANING AND OPERATION:
 NO SIGNIFICANT RISKS IDENTIFIED

DECOMMISSIONING OR DEMOLITION:
 NO SIGNIFICANT RISKS IDENTIFIED

Rev.	Description	Date	Author	Designer	Checker	Reviewer	Approver
P01.01							

Supplier

wsp binnies
 Delivering sustainable outcomes through collaborative working

WSP Binnies
 60 High Street, Redhill, Surrey, RH1 1SH, UK.
 Tel: +44(0)1737 856399

Project Title

THE RIVER THAMES SCHEME ECC PHASE

Drawing Title

FERRIS MEADOW LAKE

Option 2 - Direct flood Channel north of Ferris Meadow Lake into River Thames via the Chap



© copyright reserved

Parent Model
NOT FROM MODEL

Security Classification
OFFICIAL

Scale
1:2000

Author SPJ	Designer DESIGNER	Checker CHECKER	Reviewer REVIEWER	Approver APPROVER
----------------------	-----------------------------	---------------------------	-----------------------------	-----------------------------

Suitability
Initial Status or WIP

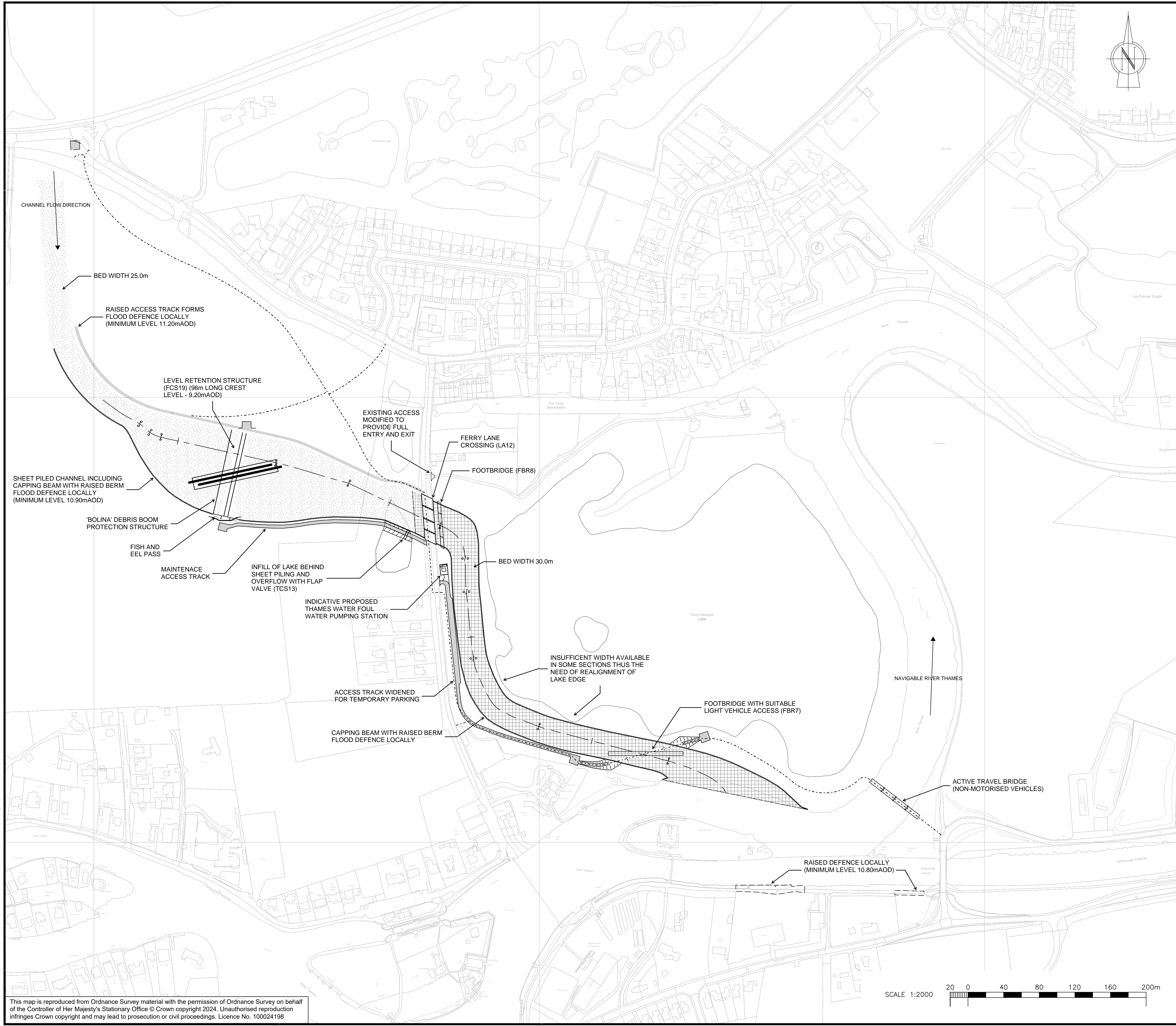
Status S0	Revision P01.01
---------------------	---------------------------

Information Container
ENVIMSE500260-CBI-ZZ-3SCS-DR-C-46000

A1 Sheet Size

This map is reproduced from Ordnance Survey material with the permission of Ordnance Survey on behalf of the Controller of Her Majesty's Stationary Office © Crown copyright 2024. Unauthorised reproduction infringes Crown copyright and may lead to prosecution or civil proceedings. Licence No. 100024198





Originator's Information Container
 ENVIMSE500260-CBI-ZZ-3SCS-DR-C-46000

NOTES:
 1. ALL DIMENSIONS IN METRES AND ALL LEVELS IN METRES AOD, UNLESS NOTED OTHERWISE.

LEGEND:

	CONCRETE BED PROTECTION		JOINT MARKERS
	BANK / BED SCOUR PROTECTION		EL
	ACCESS TRACK		
	INDICATIVE ACTIVE TRAVEL ROUTE		
	SHEET PILED CHANNEL		

SAFETY, HEALTH AND ENVIRONMENTAL INFORMATION:

IN ADDITION TO THE HAZARDS OR RISKS NORMALLY ASSOCIATED WITH THE TYPES OF WORK DETAILED ON THIS DRAWING, THE FOLLOWING SIGNIFICANT RESIDUAL RISKS SHOULD BE NOTED. FURTHER DETAILS ARE INCLUDED IN THE CDM DESIGN RISK MANAGEMENT REGISTER

CONSTRUCTION:
 NO SIGNIFICANT RISKS IDENTIFIED

MAINTENANCE, CLEANING AND OPERATION:
 NO SIGNIFICANT RISKS IDENTIFIED

DECOMMISSIONING OR DEMOLITION:
 NO SIGNIFICANT RISKS IDENTIFIED

Rev.	Description	Date	Author	Designer	Checker	Reviewer	Approver

Document Control

Supplier

Delivering sustainable outcomes through collaborative working

WSP Binnies
 60 High Street, Redhill, Surrey, RH1 1SH, UK.
 Tel: +44(0)1737 856399

Project Title

THE RIVER THAMES SCHEME ECC PHASE

Drawing Title

FERRIS MEADOW LAKE

Option 3 - Direct flood channel to west side of Ferris Meadow Lake along newly constructed route



© copyright reserved

Parent Model
NOT FROM MODEL

Security Classification
OFFICIAL

Scale
1:2000

Author SPJ	Designer DESIGNER	Checker CHECKER	Reviewer REVIEWER	Approver APPROVER
---------------	----------------------	--------------------	----------------------	----------------------

Suitability
Initial Status or WIP

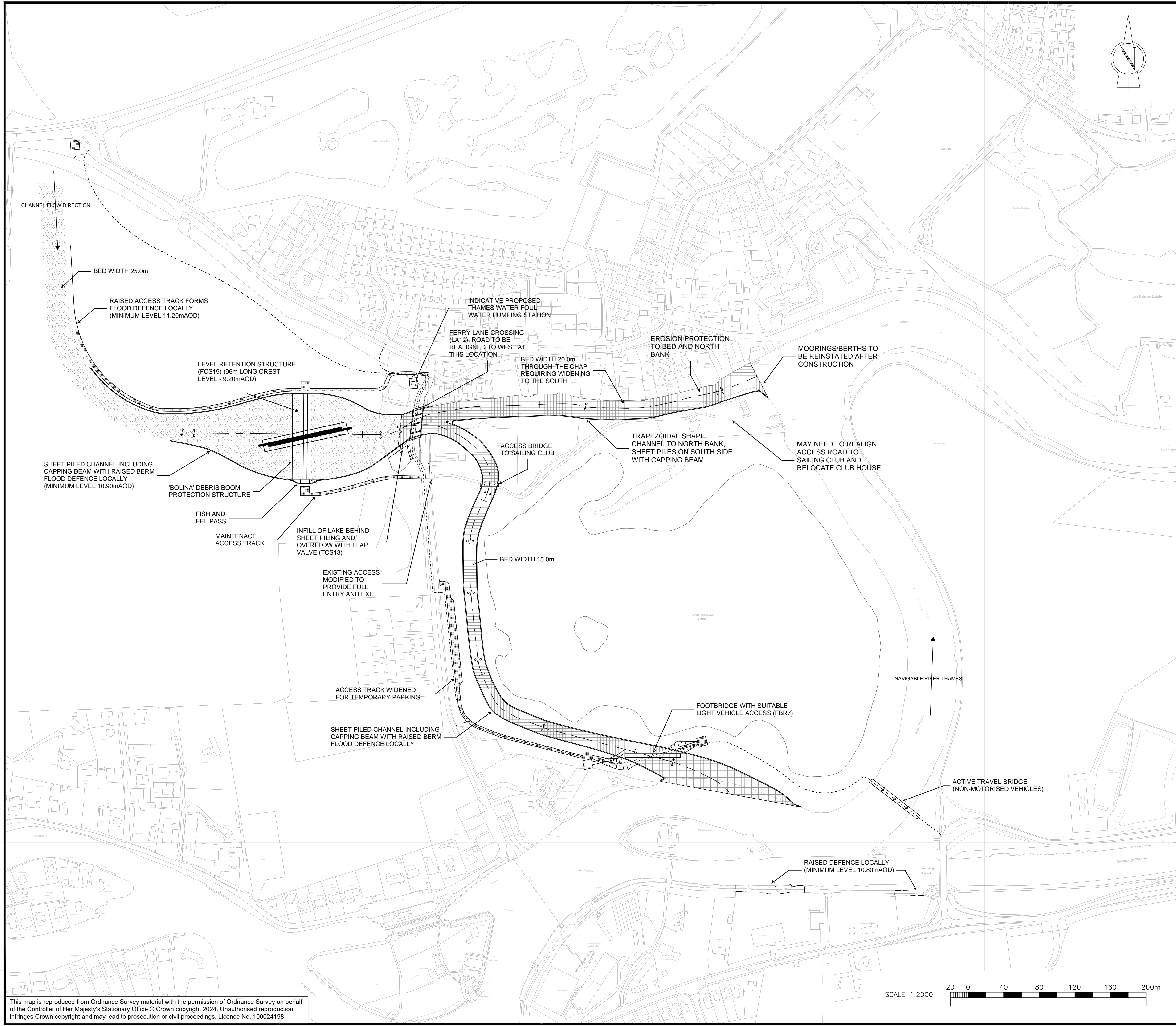
Status S0	Revision P01.01
--------------	--------------------

Information Container
 ENVIMSE500260-CBI-ZZ-3SCS-DR-C-46000

A1 Sheet Size

This map is reproduced from Ordnance Survey material with the permission of Ordnance Survey on behalf of the Controller of Her Majesty's Stationary Office © Crown copyright 2024. Unauthorised reproduction infringes Crown copyright and may lead to prosecution or civil proceedings. Licence No. 100024198





Originator's Information Container
 ENVIMSE500260-CBI-ZZ-3SCS-DR-C-46000

NOTES:
 1. ALL DIMENSIONS IN METRES AND ALL LEVELS IN METRES AOD, UNLESS NOTED OTHERWISE.

LEGEND:

	CONCRETE BED PROTECTION		JOINT MARKERS
	BANK / BED SCOUR PROTECTION		LEVEL
	ACCESS TRACK		
	INDICATIVE ACTIVE TRAVEL ROUTE		
	SHEET PILED CHANNEL		

SAFETY, HEALTH AND ENVIRONMENTAL INFORMATION:

IN ADDITION TO THE HAZARDS OR RISKS NORMALLY ASSOCIATED WITH THE TYPES OF WORK DETAILED ON THIS DRAWING, THE FOLLOWING SIGNIFICANT RESIDUAL RISKS SHOULD BE NOTED. FURTHER DETAILS ARE INCLUDED IN THE CDM DESIGN RISK MANAGEMENT REGISTER

CONSTRUCTION:
 NO SIGNIFICANT RISKS IDENTIFIED

MAINTENANCE, CLEANING AND OPERATION:
 NO SIGNIFICANT RISKS IDENTIFIED

DECOMMISSIONING OR DEMOLITION:
 NO SIGNIFICANT RISKS IDENTIFIED

Rev.	Description	Date	Author	Designer	Checker	Reviewer	Approver

Document Control

Supplier

Delivering sustainable outcomes through collaborative working

WSP Binnies
 60 High Street, Redhill, Surrey, RH1 1SH, UK.
 Tel: +44(0)1737 856399

Project Title
**THE RIVER THAMES SCHEME
 ECC PHASE**

Drawing Title
FERRIS MEADOW LAKE

Option 4 - Divide flood channel into two sections with half directed via the Chap and half to west of Ferris Meadow Lake



© copyright reserved

Parent Model
NOT FROM MODEL

Security Classification
OFFICIAL

Scale
1:2000

Author SPJ	Designer DESIGNER	Checker CHECKER	Reviewer REVIEWER	Approver APPROVER
----------------------	-----------------------------	---------------------------	-----------------------------	-----------------------------

Suitability
Initial Status or WIP

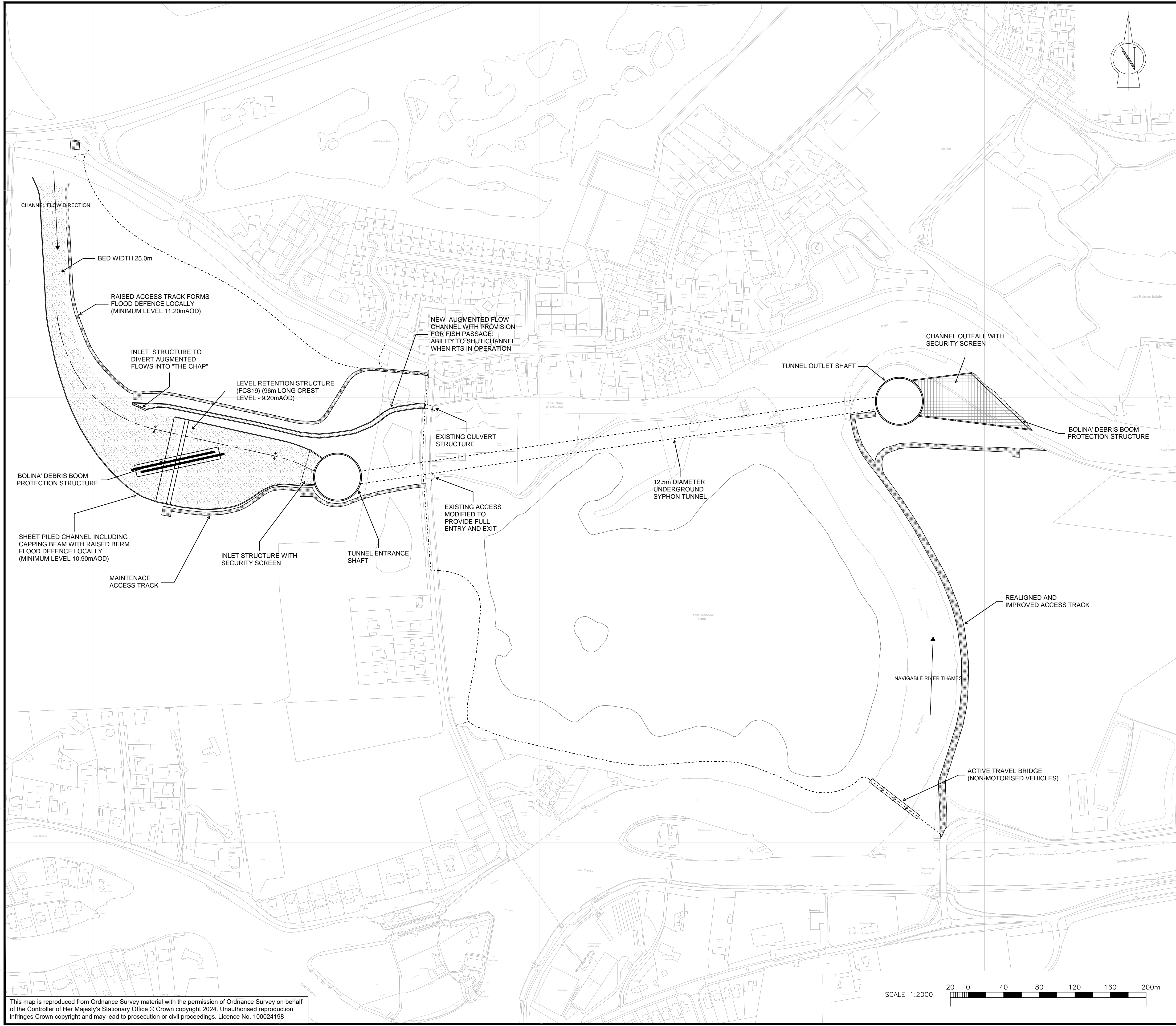
Status S0	Revision P01.01
---------------------	---------------------------

Information Container
 ENVIMSE500260-CBI-ZZ-3SCS-DR-C-46000

A1 Sheet Size

This map is reproduced from Ordnance Survey material with the permission of Ordnance Survey on behalf of the Controller of Her Majesty's Stationary Office © Crown copyright 2024. Unauthorised reproduction infringes Crown copyright and may lead to prosecution or civil proceedings. Licence No. 100024198

SCALE 1:2000



Originator's Information Container
 ENVIMSE500260-CBI-ZZ-3SCS-DR-C-46000

NOTES:
 1. ALL DIMENSIONS IN METRES AND ALL LEVELS IN METRES AOD, UNLESS NOTED OTHERWISE.

- CONCRETE BED PROTECTION
- BANK / BED SCOUR PROTECTION
- INDICATIVE ACTIVE TRAVEL ROUTE

SAFETY, HEALTH AND ENVIRONMENTAL INFORMATION:	
IN ADDITION TO THE HAZARDS OR RISKS NORMALLY ASSOCIATED WITH THE TYPES OF WORK DETAILED ON THIS DRAWING, THE FOLLOWING SIGNIFICANT RESIDUAL RISKS SHOULD BE NOTED. FURTHER DETAILS ARE INCLUDED IN THE CDM DESIGN RISK MANAGEMENT REGISTER	
CONSTRUCTION:	NO SIGNIFICANT RISKS IDENTIFIED
MAINTENANCE, CLEANING AND OPERATION:	NO SIGNIFICANT RISKS IDENTIFIED
DECOMMISSIONING OR DEMOLITION:	NO SIGNIFICANT RISKS IDENTIFIED

Rev.	Description	Date	Author	Designer	Checker	Reviewer	Approver
P01.01							

Supplier

WSP Binnies
 60 High Street, Redhill, Surrey, RH1 1SH, UK.
 Tel: +44(0)1737 856399

**THE RIVER THAMES SCHEME
 ECC PHASE**

**DRAWING TITLE
 FERRIS MEADOW LAKE**

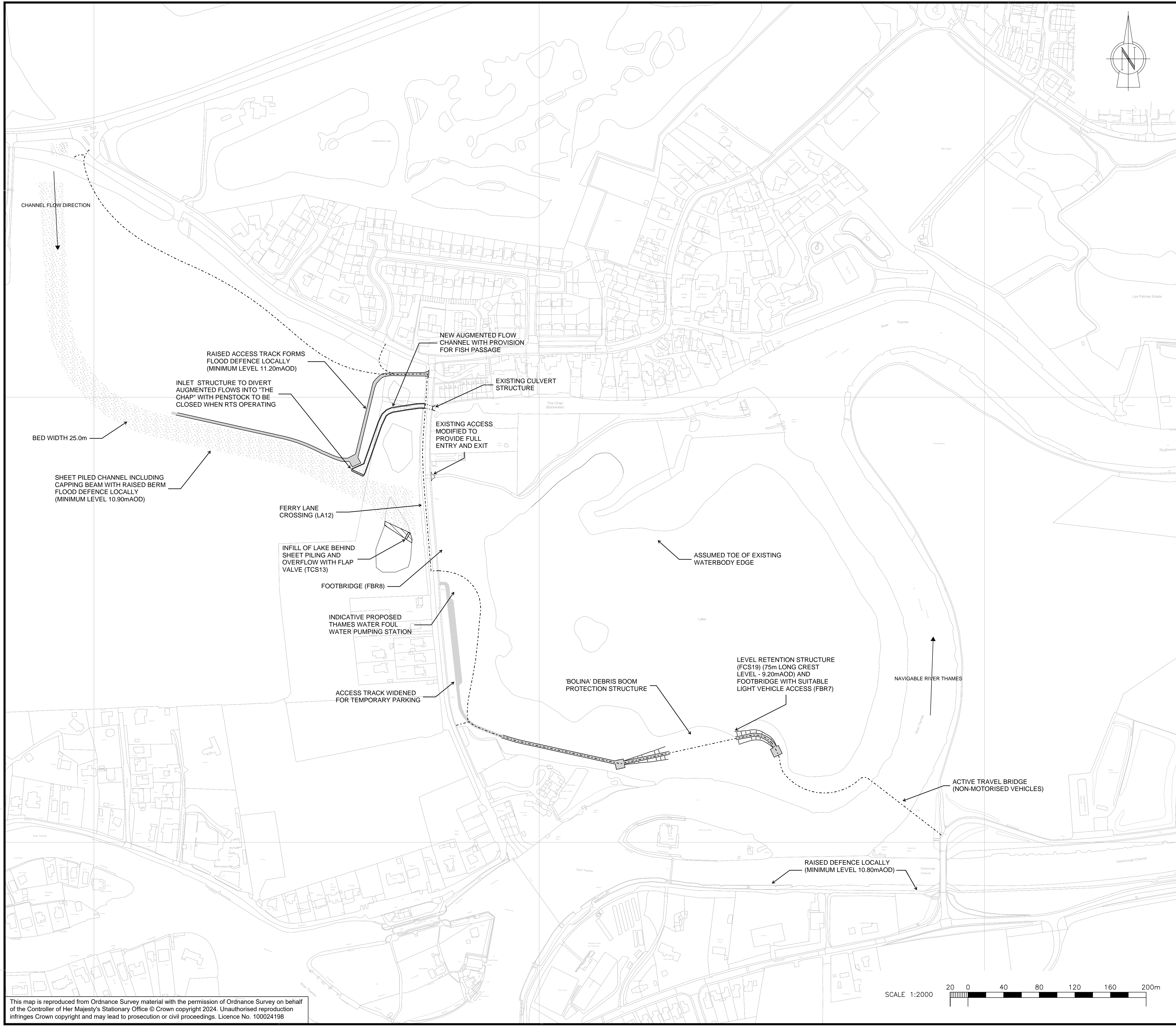
Option 5 - Tunnel under Ferris Meadow Lake for flood flows & augmented flow into the Chap



Parent Model		Scale	
NOT FROM MODEL		1:2000	
Security Classification		OFFICIAL	
Author	Designer	Checker	Reviewer
SPJ	DESIGNER	CHECKER	REVIEWER
Approver	Approval		Approval
Approver	APPROVER		APPROVER
Suitability	Initial Status or WIP	Status	Revision
Information Container	ENVIMSE500260-CBI-ZZ-3SCS-DR-C-46000	S0	P01.01
Information Container		A1 Sheet Size	

This map is reproduced from Ordnance Survey material with the permission of Ordnance Survey on behalf of the Controller of Her Majesty's Stationary Office © Crown copyright 2024. Unauthorised reproduction infringes Crown copyright and may lead to prosecution or civil proceedings. Licence No. 100024198





Originator's Information Container
ENVIMSE500260-CBI-ZZ-3SCS-DR-C-46000

NOTES
 1. ALL DIMENSIONS IN METRES AND ALL LEVELS IN METRES AOD, UNLESS NOTED OTHERWISE.

BANK / BED SCOUR PROTECTION
 INDICATIVE ACTIVE TRAVEL ROUTE

SAFETY, HEALTH AND ENVIRONMENTAL INFORMATION:

IN ADDITION TO THE HAZARDS OR RISKS NORMALLY ASSOCIATED WITH THE TYPES OF WORK DETAILED ON THIS DRAWING, THE FOLLOWING SIGNIFICANT RESIDUAL RISKS SHOULD BE NOTED. FURTHER DETAILS ARE INCLUDED IN THE CDM DESIGN RISK MANAGEMENT REGISTER

CONSTRUCTION:
 NO SIGNIFICANT RISKS IDENTIFIED

MAINTENANCE, CLEANING AND OPERATION:
 NO SIGNIFICANT RISKS IDENTIFIED

DECOMMISSIONING OR DEMOLITION:
 NO SIGNIFICANT RISKS IDENTIFIED

Rev.	Description	Date	Author	Designer	Checker	Reviewer	Approver
P01.01							

Supplier

Delivering sustainable outcomes through collaborative working

WSP Binnies
 60 High Street, Redhill, Surrey, RH1 1SH, UK.
 Tel: +44(0)1737 856399

Project Title
**THE RIVER THAMES SCHEME
 ECC PHASE**

Drawing Title
FERRIS MEADOW LAKE

Option 6a - Retain flood relief channel alignment through Ferris Meadow Lake with augmented flow diverted into 'The Chap' without new flow control structure.



© copyright reserved

Parent Model
NOT FROM MODEL

Security Classification
OFFICIAL

Scale
1:2000

Author SPJ	Designer DESIGNER	Checker CHECKER	Reviewer REVIEWER	Approver APPROVER
----------------------	-----------------------------	---------------------------	-----------------------------	-----------------------------

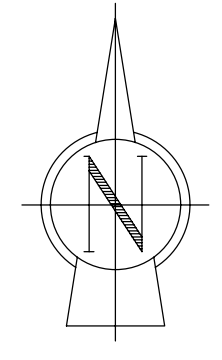
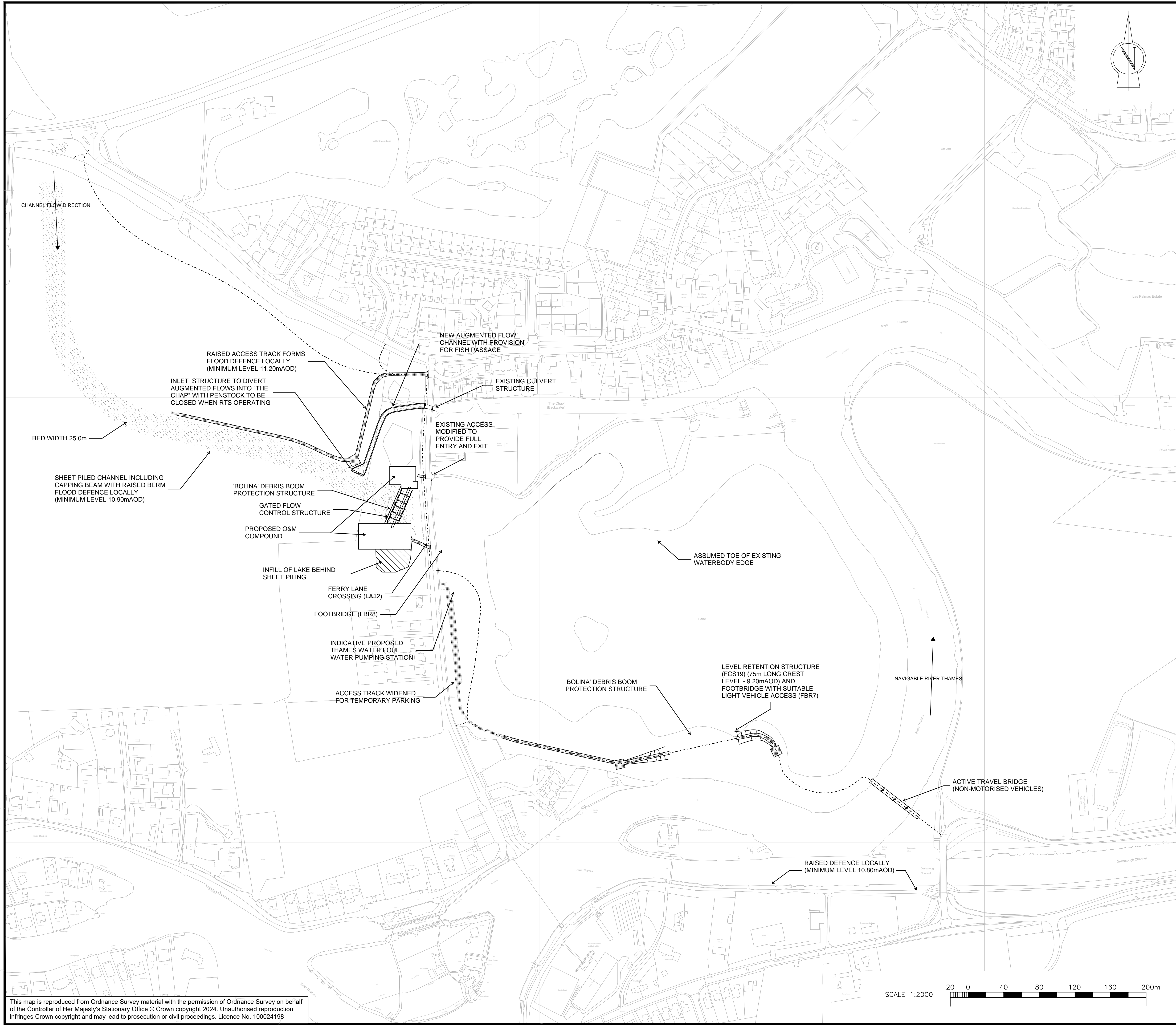
Suitability
Initial Status or WIP

Status S0	Revision P01.01
---------------------	---------------------------

Information Container
ENVIMSE500260-CBI-ZZ-3SCS-DR-C-46000

A1 Sheet Size

This map is reproduced from Ordnance Survey material with the permission of Ordnance Survey on behalf of the Controller of Her Majesty's Stationary Office © Crown copyright 2024. Unauthorised reproduction infringes Crown copyright and may lead to prosecution or civil proceedings. Licence No. 100024198



Originator's Information Container
ENVIMSE500260-CBI-ZZ-3SCS-DR-C-46000

NOTES
 1. ALL DIMENSIONS IN METRES AND ALL LEVELS IN METRES AOD, UNLESS NOTED OTHERWISE.

LEGEND:

	FLOOD CHANNEL CENTRELINE WITH TANGENT POINT MARKERS
	BANK / BED SCOUR PROTECTION
	ACCESS TRACK
	INDICATIVE ACTIVE TRAVEL ROUTE
	SHEET PILED CHANNEL

SAFETY, HEALTH AND ENVIRONMENTAL INFORMATION:

IN ADDITION TO THE HAZARDS OR RISKS NORMALLY ASSOCIATED WITH THE TYPES OF WORK DETAILED ON THIS DRAWING, THE FOLLOWING SIGNIFICANT RESIDUAL RISKS SHOULD BE NOTED. FURTHER DETAILS ARE INCLUDED IN THE CDM DESIGN RISK MANAGEMENT REGISTER

CONSTRUCTION:
 NO SIGNIFICANT RISKS IDENTIFIED

MAINTENANCE, CLEANING AND OPERATION:
 NO SIGNIFICANT RISKS IDENTIFIED

DECOMMISSIONING OR DEMOLITION:
 NO SIGNIFICANT RISKS IDENTIFIED

Rev.	Description	Date	Author	Designer	Checker	Reviewer	Approver
P01.01							

Document Control

Supplier

Delivering sustainable outcomes through collaborative working

WSP Binnies
 60 High Street, Redhill, Surrey, RH11 1SH, UK.
 Tel: +44(0)1737 856399

Project Title

THE RIVER THAMES SCHEME ECC PHASE

Drawing Title

FERRIS MEADOW LAKE

Option 6b - Retain flood relief channel alignment through Ferris Meadow Lake with augmented flow diverted into 'The Chap' with new flow control structure.



© copyright reserved

Parent Model
NOT FROM MODEL

Security Classification
OFFICIAL

Scale
1:2000

Author SPJ	Designer DESIGNER	Checker CHECKER	Reviewer REVIEWER	Approver APPROVER
----------------------	-----------------------------	---------------------------	-----------------------------	-----------------------------

Suitability
Initial Status or WIP

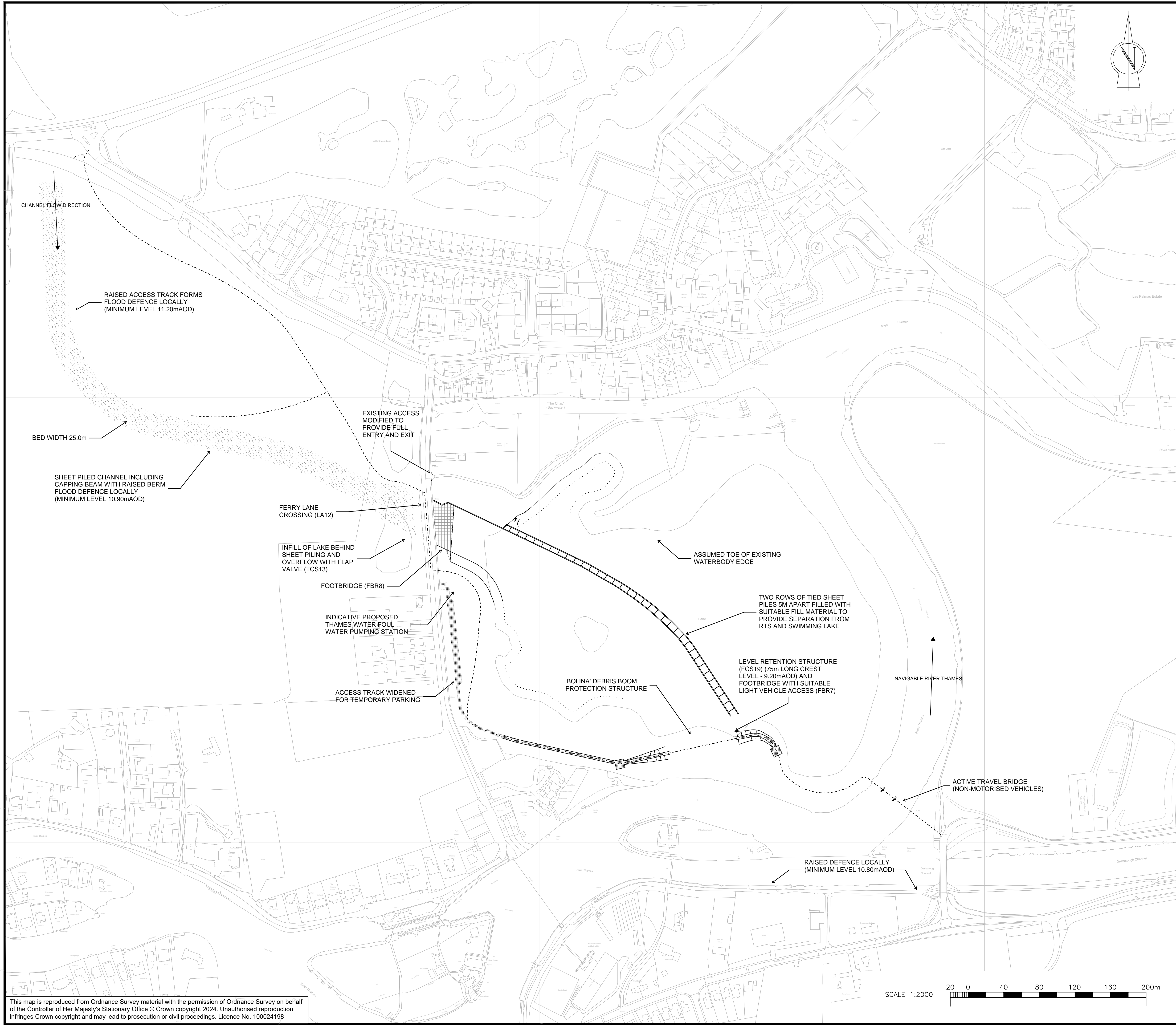
Status S0	Revision P01.01
---------------------	---------------------------

Information Container
ENVIMSE500260-CBI-ZZ-3SCS-DR-C-46000

A1 Sheet Size

This map is reproduced from Ordnance Survey material with the permission of Ordnance Survey on behalf of the Controller of Her Majesty's Stationary Office © Crown copyright 2024. Unauthorised reproduction infringes Crown copyright and may lead to prosecution or civil proceedings. Licence No. 100024198





Originator's Information Container
ENVIMSE500260-CBI-ZZ-3SCS-DR-C-46000

NOTES
 1. ALL DIMENSIONS IN METRES AND ALL LEVELS IN METRES AOD, UNLESS NOTED OTHERWISE.

BANK / BED SCOUR PROTECTION

INDICATIVE ACTIVE TRAVEL ROUTE

SAFETY, HEALTH AND ENVIRONMENTAL INFORMATION:

IN ADDITION TO THE HAZARDS OR RISKS NORMALLY ASSOCIATED WITH THE TYPES OF WORK DETAILED ON THIS DRAWING, THE FOLLOWING SIGNIFICANT RESIDUAL RISKS SHOULD BE NOTED. FURTHER DETAILS ARE INCLUDED IN THE CDM DESIGN RISK MANAGEMENT REGISTER

CONSTRUCTION:	NO SIGNIFICANT RISKS IDENTIFIED
MAINTENANCE, CLEANING AND OPERATION:	NO SIGNIFICANT RISKS IDENTIFIED
DECOMMISSIONING OR DEMOLITION:	NO SIGNIFICANT RISKS IDENTIFIED

Rev.	Description	Date	Author	Designer	Checker	Reviewer	Approver

Document Control

Supplier

Delivering sustainable outcomes through collaborative working

WSP Binnies
 60 High Street, Redhill, Surrey, RH11 1SH, UK.
 Tel: +44(0)1737 856399

Project Title

THE RIVER THAMES SCHEME ECC PHASE

Drawing Title

FERRIS MEADOW LAKE

Option 7 - RTS Channel and Swimming Lake separation

PROTECTING our communities
 SECURING our economy
 ENHANCING our Thames

© copyright reserved

Parent Model
NOT FROM MODEL

Security Classification	Scale
OFFICIAL	1:2000

Author	Designer	Checker	Reviewer	Approver
SPJ	DESIGNER	CHECKER	REVIEWER	APPROVER

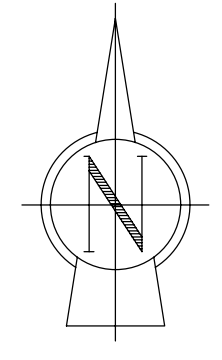
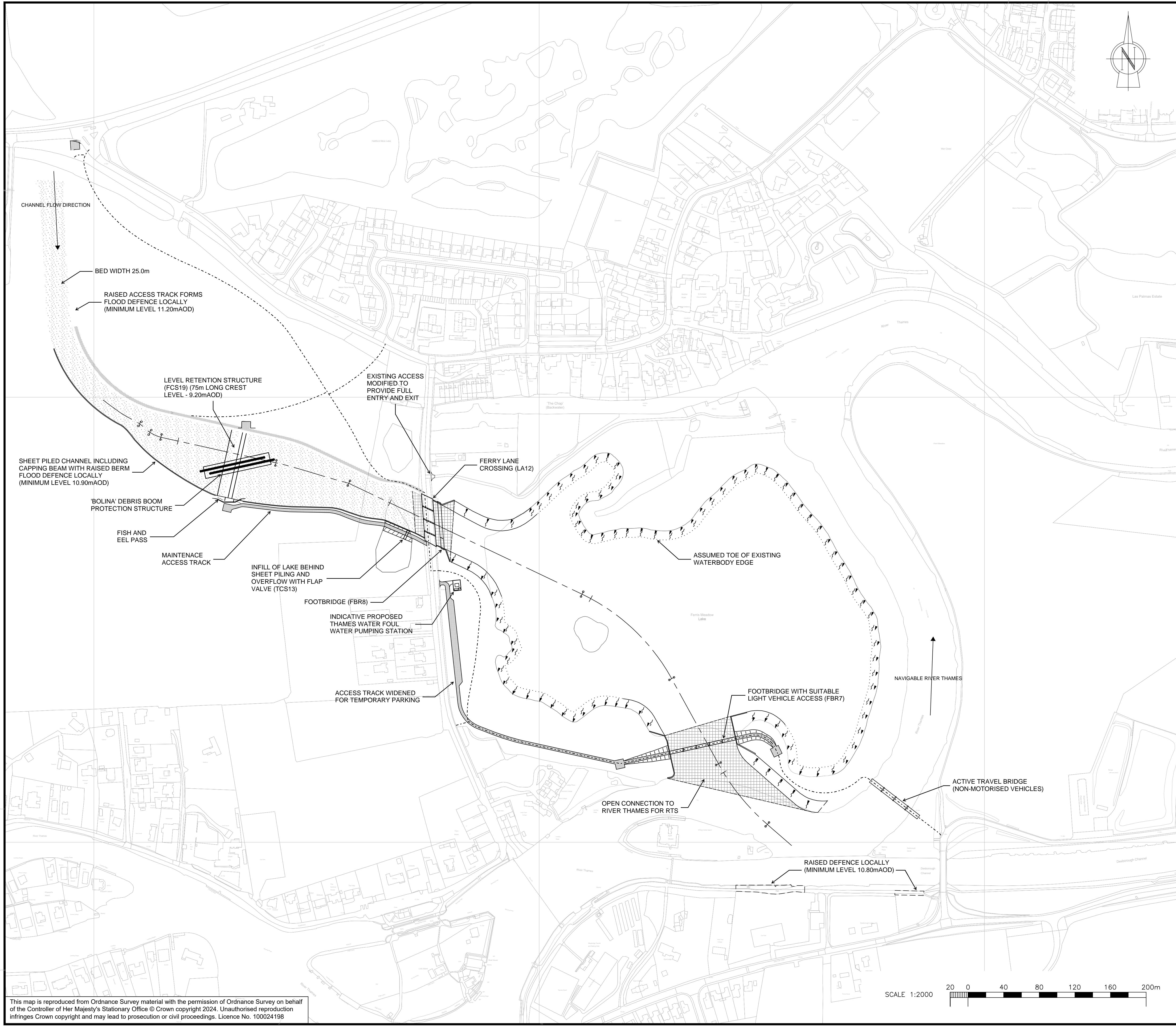
Suitability	Status	Revision
Initial Status or WIP	S0	P01.01

Information Container
ENVIMSE500260-CBI-ZZ-3SCS-DR-C-46000

A1 Sheet Size

This map is reproduced from Ordnance Survey material with the permission of Ordnance Survey on behalf of the Controller of Her Majesty's Stationary Office © Crown copyright 2024. Unauthorised reproduction infringes Crown copyright and may lead to prosecution or civil proceedings. Licence No. 100024198





Originator's Information Container
ENVIMSE500260-CBI-ZZ-3SCS-DR-C-46000

NOTES
 1. ALL DIMENSIONS IN METRES AND ALL LEVELS IN METRES AOD, UNLESS NOTED OTHERWISE.

LEGEND:

	CONCRETE BED PROTECTION		JOINT MARKERS
	BANK / BED SCOUR PROTECTION		LEVEL
	ACCESS TRACK		
	INDICATIVE ACTIVE TRAVEL ROUTE		
	SHEET PILED CHANNEL		

SAFETY, HEALTH AND ENVIRONMENTAL INFORMATION:

IN ADDITION TO THE HAZARDS OR RISKS NORMALLY ASSOCIATED WITH THE TYPES OF WORK DETAILED ON THIS DRAWING, THE FOLLOWING SIGNIFICANT RESIDUAL RISKS SHOULD BE NOTED. FURTHER DETAILS ARE INCLUDED IN THE CDM DESIGN RISK MANAGEMENT REGISTER

CONSTRUCTION:
 NO SIGNIFICANT RISKS IDENTIFIED

MAINTENANCE, CLEANING AND OPERATION:
 NO SIGNIFICANT RISKS IDENTIFIED

DECOMMISSIONING OR DEMOLITION:
 NO SIGNIFICANT RISKS IDENTIFIED

Rev.	Description	Date	Author	Designer	Checker	Reviewer	Approver
P01.01							

Document Control

Supplier

Delivering sustainable outcomes through collaborative working

WSP Binnies
 60 High Street, Redhill, Surrey, RH1 1SH, UK.
 Tel: +44(0)1737 856399

Project Title

THE RIVER THAMES SCHEME ECC PHASE

Drawing Title

FERRIS MEADOW LAKE

Option 8 - Open connection to River Thames with future potential to change the recreational use



© copyright reserved

Parent Model
NOT FROM MODEL

Security Classification
OFFICIAL

Scale
1:2000

Author SPJ	Designer DESIGNER	Checker CHECKER	Reviewer REVIEWER	Approver APPROVER
----------------------	-----------------------------	---------------------------	-----------------------------	-----------------------------

Suitability
Initial Status or WIP

Status S0	Revision P01.01
---------------------	---------------------------

Information Container
ENVIMSE500260-CBI-ZZ-3SCS-DR-C-46000

A1 Sheet Size

This map is reproduced from Ordnance Survey material with the permission of Ordnance Survey on behalf of the Controller of Her Majesty's Stationary Office © Crown copyright 2024. Unauthorised reproduction infringes Crown copyright and may lead to prosecution or civil proceedings. Licence No. 100024198





Contact

If you would like to contact us outside of your response to this consultation, you can use one of the options below:

Email: enquiries@riverthamesscheme.org.uk

Web: www.riverthamesscheme.org.uk

Telephone: **03456 009 009**

Accessibility

If you would prefer this brochure in large text, a different format or language please contact using the details below and we will do our best to help.

Text (SMS): **07860 053 465**

(for the deaf or hard of hearing community)

Textphone (via Relay UK): **18001 03456 009 009**

British Sign Language: www.surreycc.gov.uk/bsl

FSC

This document was printed on FSC certified paper from sustainable sources using carbon environmentally friendly ink.

Copyright September 2024

-  [RiverThamesScheme](#)
-  [riverthamesscheme.uk](#)
-  [riverthamesscheme](#)
-  [ThamesScheme](#)
-  [RiverThamesScheme](#)
-  [RiverThamesScheme](#)

