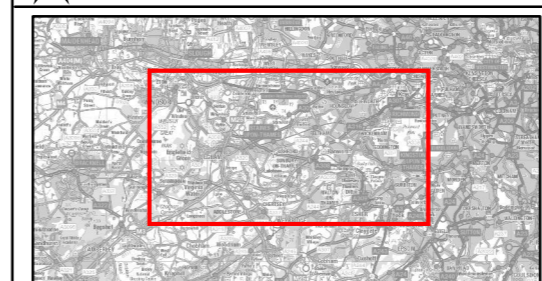
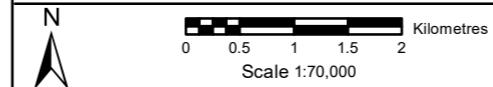


**Legend**

- PROJECT BOUNDARY FOR EIA PEIR
- LANDSCAPE AND VISUAL IMPACT ASSESSMENT (LVIA) STUDY AREA FOR EIA PEIR
- RUNNYMEDE CHANNEL
- SPELTHORNE CHANNEL
- NATIONAL CHARACTER AREAS (NCA)
- SETTLED DEVELOPED FLOODPLAIN - HORTON & WRAYSBURY
- LONDON LANDSCAPE FRAMEWORK**
- COLNE RIVER VALLEY
- UPPER THAMES FLOODPLAIN
- SURREY LANDSCAPE CHARACTER ASSESSMENT**
- DISTINCT AREAS ON THE EDGE OF URBAN AREAS
- RESERVOIRS
- RIVER FLOODPLAIN
- RIVER VALLEY FLOOR
- SETTLED AND WOODED SANDY FARMLAND
- SIGNIFICANT GREEN SPACES WITHIN URBAN AREAS

Main Plan Scale:



Reproduced by permission of Ordnance Survey on behalf of HMSO. © Crown Copyright and Database Rights [2023] OS [100024198]



**wsp binies**  
 Delivering Sustainable Outcomes Through Collaborative Working  
 Registered Office: Spring Lodge, 172 Chester Road, Halesley, Cheshire, W46 0AR UK  
 Registered in England & Wales No: 03163649

**RIVER THAMES SCHEME (RTS)**

**EIA PEIR - FIGURE 5.18:  
 PUBLISHED LANDSCAPE CHARACTER AREAS**

CD1	MA	AH	DUJ	KQ	17/11/2023	FOR PUBLIC CONSULTATION
P02	MA	AH	DUJ	KQ	19/10/2023	FOR REVIEW AND COMMENT
P01	AJ	AH	DUJ	KQ	23/08/2023	FOR REVIEW AND COMMENT
Rev.	Drawn	Chkd	Rvwd	Apprvd	Date	Description
Status: S10						
Designed by: MA			Date: 11/23			Revision: C01
Scale: 1:70,000		Project Number: 4021225		Drawing Number: ENV/MSE/00260/CBI-Z3-3Z-DR-EN-0073		